

## **GHDD-406633 (Solar Road Stud )**



MAIN PARAMETERS: Material : Aluminum alloy shell , solar panel (2.4V ,0.15— 0 . 3 W),

2 pc Ni-Mh rechargeable battery (1.2V) , 6pcs Super bright LED,

2 Transparent plastic shell , 1 circuit board .

☆Light intensity : 8000 mcd

☆Color : red , yellow , green , blue LED

☆Charging period : 8 hours / day

☆Lighting period : 12 hours / day

☆Life time : 3 years

☆Warrant period : 1 years

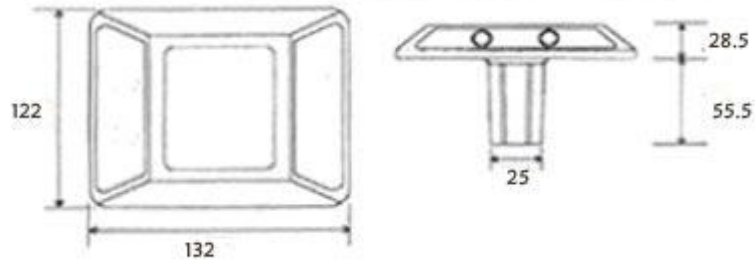
Packing information:

Scuttle : 350 g/pcs

48 pcs/carton

Size : 335×245×207mm (110\*105\*35mm) 0.025 cubic meter

## GHDD-406632 (Solar Road Stud )



型号: GHDD-406632

项目		参数	ITEM		PARAMETER
外形尺寸	长度	132mm	SIZE	LENGTH	132mm
	宽度	122mm		WIDTH	122mm
	高度	28.5mm		HEIGHT	28.5mm
	锚钉尺寸	55.5X25mm		ANCHOR SIZE	55.5X25mm 25mm
太阳能电池	类型	单/多晶硅	SOLAR PANEL	TYPE	CRYSTAL
	功率	0.3W		POWER	0.3W
	电压	2.4V		VOLTAGE	2.4V
	电流	125mA		CURRENT	125mA
充电电池	类型	镍氢电池	BATTERY	TYPE	Ni-Mh
	容量	1.2V/2000mAh		CAPACITY	1.2V/2000mAh
	数量	1		AMOUNT	1
光源	类型	超高亮度发光二极管	LIGHT SOURCE	TYPE	SUPER BRIGHT LED
	颜色	黄/红色		COLOUR	YELLOW/RED
	亮度	8000mcd		LUMINANCE	8000mcd
	数量	4		AMOUNT	4
标准充电时间		5 小时	CHANGERING TIME		5 hours
工作方式		天黑或光线暗时, LED 自动闪烁, 闪烁频率为 40~50 次/分钟;天亮或光线明亮时 LED 自动熄灭, 太阳能电池同时对蓄电 池进行充电	OPERATING MODE		Turn on the day and turn off at night automatically. The flashing frequency is 40~50times/min, when LED is working.
连续工作时间		120 小时	OPERATING TIME		120 hours
可视距离		1000 米	DISTANCE IN SIGHT		1000m
主体外壳材质		铝合金	MAIN BODY LOWER PARTS		ALUMINIUM ALLOY
主体顶部材质		高透光率聚碳酸酯	MAIN BODY UPPER PARTS		CLEAR POLYCARBONATE
使用寿命		3~5 年	LIFE TIME		3~5YEARS

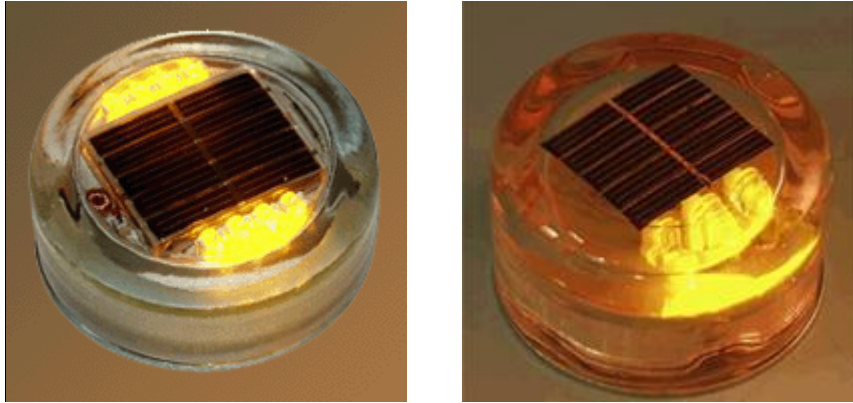
## 太阳能道钉 GHDD-406631 (Solar Road Stud )



型号: GHDD-406631

项目		参数	ITEM		PARAMETER
外形尺寸	长度	153mm	SIZE	LENGTH	153mm
	宽度	143mm		WIDTH	143mm
	高度	28.5mm		HEIGHT	28.5mm
	锚钉尺寸	75.5X25mm		ANCHOR SIZE	75.5X25mm
太阳能电池	类型	单/多晶硅	SOLAR PANEL	TYPE	CRYSTAL
	功率	0.3W		POWER	0.3W
	电压	2.4V		VOLTAGE	2.4V
	电流	125mA		CURRENT	125mA
充电电池	类型	镍氢电池	BATTERY	TYPE	Ni-Mh
	容量	1.2V/2000mAh		CAPACITY	1.2V/2000mAh
	数量	1		AMOUNT	1
光源	类型	超高亮度发光二极管	LIGHT SOURCE	TYPE	SUPER BRIGHT LED
	颜色	黄/红色		COLOUR	YELLOW/RED
	亮度	8000mcd		LUMINANCE	8000mcd
	数量	4		AMOUNT	4
标准充电时间		5 小时	CHANGERING TIME		5 hours
工作方式		天黑或光线暗时, LED 自动闪烁, 闪烁频率为 40~50 次/分钟;天亮或光线明亮时 LED 自动熄灭, 太阳能电池同时对蓄电池进行充电	OPERATING MODE		Turn on the day and turn off at night automatically. The flashing frequency is 40~50times/min, when LED is working.
连续工作时间		120 小时	OPERATING TIME		120 hours
可视距离		1000 米	DISTANCE IN SIGHT		1000m
主体外壳材质		铝合金	MAIN BODY LOWER PARTS		ALUMINIUM ALLOY
主体顶部材质		高透光率聚碳酸酯	MAIN BODY UPPER PARTS		CLEAR POLYCARBONATE
使用寿命		3~5 年	LIFE TIME		3~5YEARS

## **GHDD-406634 (Solar Glass Road Stud )**



### **SOLAR GROUND FLASHER**

#### **Features:**

Easy installation, low maintenance cost

Automatic On/Off

Wide operating Temperature -30---+85℃

No electric leakage

Non-contaminating Materials

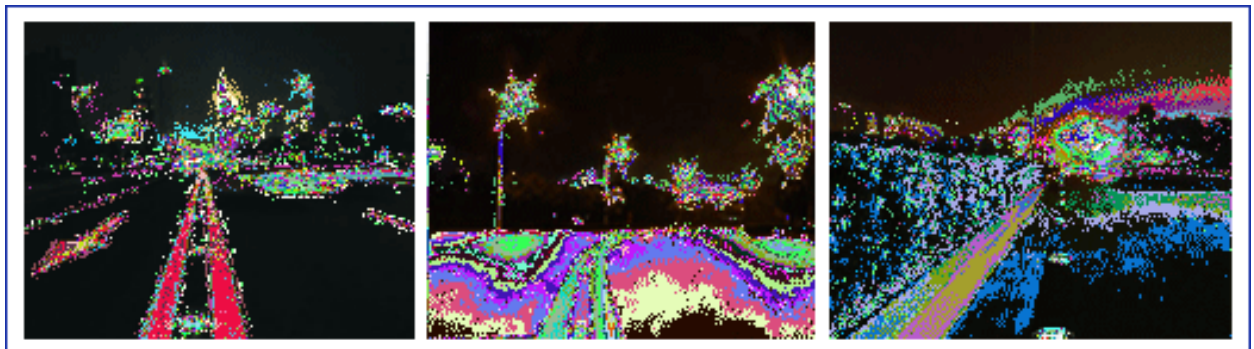
Charging time: 80min under sunlight or 6hr in rain or foggy weather

Working time: more than 28hr

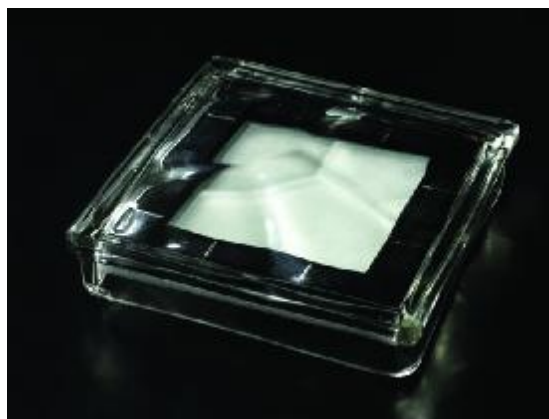
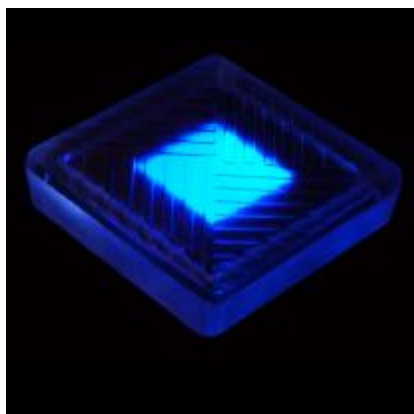
Long life: 3—5 years

Solar panel size 26\*26mm

Solar road stud size  $\phi$ 50mm\*39mm



## **GHDD-406635 (Solar Brick Stud )**



### **Main Functions:**

#### **GHDD—406635**

Main Body Boron-silicon glass

Solar Cell Mono-crystalline silicon solar cell  $V_m:1.92V$   $I_m:500mA$

Battery 1.2V 4000mAH Ni-MH

LED Lamp  $\Phi 5$  Super bright LED 8 pcs

Illuminating Time 14 hours (At optimization Condition one Day Charging)

Temperature  $-20^{\circ}C \sim 50^{\circ}C$

Waterproof Excellent

Dimension 202x202x50 mm

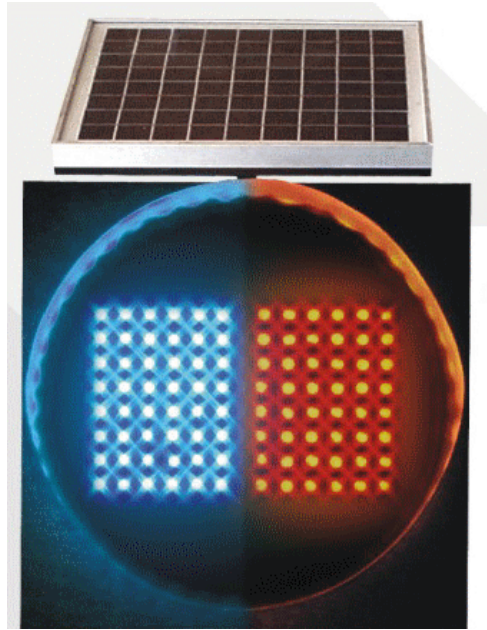
Weight 2.3Kgs Life Time 2-3years At optimization Condition

Packing Size 1pc/box, 6pcs/395x220x230mm

Packing Weight N.W.: 13.8KGS G.W.: 17.3KGS

Color Available: Yellow, blue, red, green, white

## **GHHD-406626 (Solar Traffic light)**



### **specification:**

Diameter	300mm
life time	battery 3years solar panel >10years
Frequency	60±2 /min
working time in the rainy days	>200h
Voltage	12V
Visual distance	>500m 以上
LED Brightness	BLUE 3000mcd RED 5000mcd Visual distance >500m 以上 working time >200h
solar panel	power 10W
Battery	Colloidal battery voltage 12V capacity 17Ah



## **GHJB-120040**



Design standard	lifespan	battery	3 years
		solar panel	>10years
Frequency	30±2 /min		
	continuous work in rainy days		>180h
	rated voltage		12V
LED Brightness	Visual distance		>200m 以上
	BLUE		3000mcd
	RED		5000mcd
	Visual distance		>200m
	working time		>180h
solar panel	power		10W
	Battery		Colloidal battery
			voltage 12V
	capacity		17Ah

## **GHJB-120070**



Product size	100*100cm
Design standard	lifespan      battery      3 years solar panel      >10years
Frequency	30±2 /min continuous work in rainy days >180h rated voltage 12V Visual distance >200m 以上
LED Brightness	Yellow      3000mcd Visual distance >200m working time >180h
solar panel	power 5W Battery      Colloidal battery voltage 12V capacity      17Ah



## **GHJB-210116**



Product size	70*70*70cm		
Design standard	lifespan	battery	3 years
		solar panel	>10years
Frequency	30±2 /min		
	continuous work in rainy days >180h		
	rated voltage 12V		
	Visual distance >200m 以上		
LED Brightness	white	3000mcd	
	Visual distance >200m		
	working time>180h		
solar panel	power 10W		
	Battery	Colloidal battery	
		voltage 12V	
	capacity	17Ah	

## **GHHD-406628 (Solar Traffic light)**

### **GHHD-406618**



#### **specification:**

solar panel:12V,10W(lifetime: 25years)\

battery:12V,17Ah(continuous work in rainy day for 15 days ) ;

light source: LED(120PCS), dia: 300mm;

weight: 16KG

packing size:530mm\*420mm\*420mm

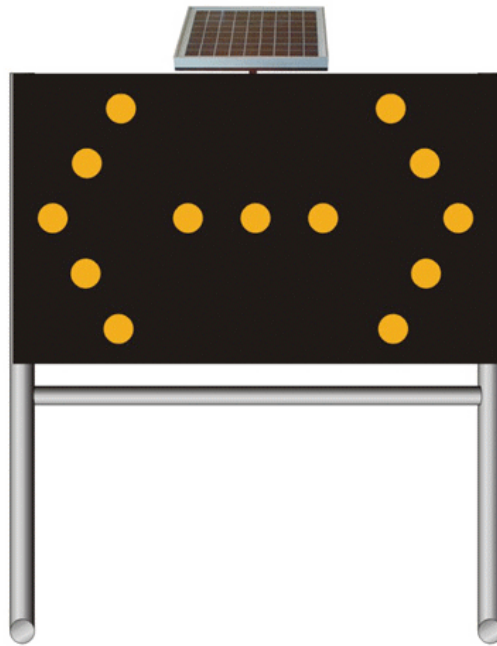
## Solar traffic sign GHHL-301286



### Specification

Light source	LED (3000mcd)
	Diameter 300mm
	Colour yellow
	Lifetime 100.000h/per
Luminescence area	62.8cm <sup>2</sup>
Solar panel	10W
	Life time ≥15years
Lifespan	5 years
Frequency	0—9mini
working hours	≥80h(in the rainy days)
Voltage	12V
Visual distance	1000m
Battery	12V65Ah

## **GHZP-016336**



### Specification

Standard

life time 8years

Frequency  $21\pm 2$  /min

Voltage 12V

Visual distance 1000m

Luminescence area 21.98cm<sup>2</sup>

LED Brightness 3000mcd/pcs

Visual distance 1000m

solar panel

power 30W

life time 15years

light source

yellow

GHJC-201615



### Specification

Screen size 1200\*750\*75mm

Integer size 1200\*1100\*1635mm

Number of LED 15 PCS

Dia of the LED 85mm

Standard life time 8years

Frequency 21±2 /min

Voltage 12V

Visual distance 1000m

Luminescence area 21.98cm<sup>2</sup>

LED Brightness 3000mcd/pcs

Visual distance 1000m

solar panel power 30W

life time 15years

light source yellow

Battery 12V 65AH

## **GHJB-120060**



Product size	100*100cm		
Design standard	lifespan	battery	3 years
		solar panel	>10years
Frequency	30±2 /min		
	continuous work in rainy days	>180h	
	rated voltage	12V	
	Visual distance	>200m 以上	
LED Brightness	BLUE	3000mcd	
	RED	5000mcd	
	Visual distance	>200m	
	working time	>180h	
solar panel	power	10W	
	Battery	Colloidal battery	
		voltage 12V	
	capacity	17Ah	

## **GHLB-602008**



### **Solar traffic alarm pillar GHLB-602008**

#### **specification:**

- 1, Solar panel : 8W / 17.4V
2. Battery: 17AH / 12V
3. LED: 5000mcd / PCS(116)
4. Color: red and yellow
5. Plash frequency: 0.9—1.1HZ / sec

#### **Feature:**

The product covered with red and yellow tape is made from Stainless steel casting, which have a very eye-catching warning in the daytime and Scintillating Luminescence with the 29 bulbs on one side at night..